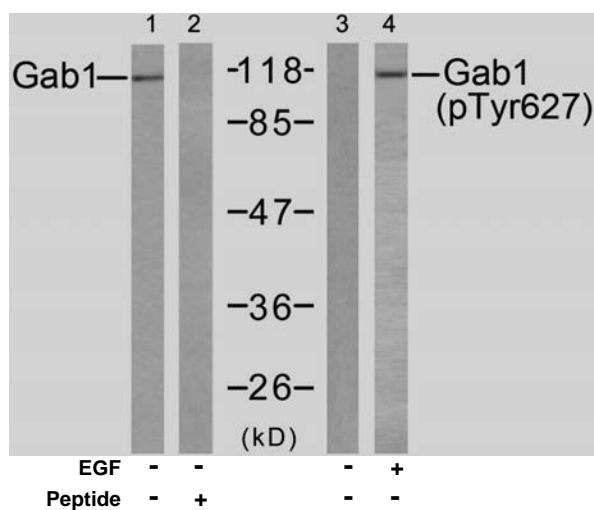


## Rabbit anti Gab1 (pTyr627)

- Catalog Number:** pAP11291  
**Amount:** 100µl (for 10 Western Blotting)  
**Swiss-Prot No. :** Q13480  
**Form of Antibody:** Rabbit IgG in phosphate buffered saline (without Mg<sup>2+</sup> and Ca<sup>2+</sup>), pH 7.4, 150mM NaCl, 0.02% sodium azide and 50% glycerol.  
**Storage/Stability:** Store at -20°C/1 year  
**Immunogen:** The antiserum was produced against synthesized phosphopeptide derived from human Gab1 around the phosphorylation site of tyrosine 627 (V-E-Y<sup>P</sup>-L-D).  
**Purification:** The antibody was affinity-purified from rabbit antiserum by affinity-chromatography using epitope-specific phosphopeptide. The antibody against non-phosphopeptide was removed by chromatography using non-phosphopeptide corresponding to the phosphorylation site.  
**Specificity/Sensitivity:** Gab1 (phospho-Tyr627) antibody detects endogenous levels of Gab1 only when phosphorylated at tyrosine 627.  
**Reactivity:** Human, Mouse  
**Applications:** WB: 1:1000  
**References:** Anders Kallin, et al. (2004) J. Biol. Chem ; 279: 17897 - 17904.  
Hideto Kameda, et al. (2001) Cell Growth Differ ; 12: 307.  
Masaki Osawa, et al. (2002) J. Cell Biol ; 158: 773.



Western blot analysis of extracts from HUVEC cells untreated or treated with EGF (200ng/ml, 15min), using Gab1 (Ab-627) antibody (AP21283, Lane 1 and 2) and Gab1 (phospho-Tyr627) antibody (pAP11291, Lane 3 and 4).

**For Research Use Only**

Contact & Ordering Information: Angio-Proteomie, 11 Park Drive, Suite 12, Boston, MA 02215, USA. Fax: (480) 247-4337, [angioproteomie@gmail.com](mailto:angioproteomie@gmail.com)